

TIPS & INFORMATION

GUEST RELATIONS

Please visit Guest Relations located inside City Hall for:

- Questions and Concerns
- Ticket Upgrades
- Separated Guest Assistance
- Lost and Found
- Services for Guests with Disabilities



Services for International Guests are available at Guest Relations.

Los Servicios para huéspedes internacionales están disponibles en la oficina de Guest Relations.

Des services pour les visiteurs internationaux sont disponibles au Guest Relations.

Serviços para hóspedes internacionais estão disponíveis no Guest Relations.

Dienste für internationale Gäste sind bei der Guest Relations erhältlich.

ゲストリレーションにて世界各国からのゲストの皆様向けのサービスをご案内しております。

PARK RULES

To provide a comfortable, safe and enjoyable experience for our Guests, please comply with Park rules, signs and instructions including:

- All bags are subject to inspection prior to admission.
- Proper attire is required.
- Smoking is allowed only in designated areas.
- Weapons are strictly prohibited.
- Guests may be asked to leave if deemed appropriate.

Additional details and a complete listing of Park rules are available at Guest Relations or disneyworld.com/parkrules.

Liberty Square Ticket Office

Visit for assistance with ticket upgrades, *My Disney Experience* and *FastPass+* selections, dining and reservations. Located near *Sleepy Hollow*.

DISNEY WILD ABOUT SAFETY® TIPS
As Timon and Pumbaa would say, "Follow the rules of the jungle!" Visit disneywildaboutsafety.com for more safety tips and fun games.

Please look for the recycling containers throughout the Park and join us in our commitment to the environment.

Please do not feed the birds or other animals, and do not throw objects (including coins) into the water.

LEAVING THE PARK? All Guests who wish to leave the Park and return later in the day may do so by presenting their original admission media.

- To get to the **Magic Kingdom® Park parking lot**, take a Monorail or Ferryboat to the Transportation and Ticket Center and then a Parking Tram.
- To get to **Epcot®**, take a Monorail or Ferryboat to the Transportation and Ticket Center and then a Monorail to *Epcot*.
- To get to **Disney's Hollywood Studios®** or **Disney's Animal Kingdom® Theme Park**, take a Bus located outside the front of the Park.
- To get to **Disney Springs®** between the hours of 4:00pm-11:00pm, take a Bus located outside the front of the Park. At all other times, take a Bus to any *Disney Resort* hotel, and then another Bus to *Disney Springs*.
- To get to **Disney's Polynesian Village Resort** or **Disney's Grand Floridian Resort & Spa**, take the Resort Monorail or Watercraft Service.
- To get to **Disney's Contemporary Resort** take the Resort Monorail or the designated walking path.
- To get to **Disney's Wilderness Lodge**, take Watercraft Service or a Bus located outside the front of the Park. For **Disney's Fort Wilderness Resort & Campground**, take Watercraft Service located outside the front of the Park.
- To get to all other **Disney Resort hotels**, take a Bus located outside the front of the Park.

Ask us about staying at a **Disney Resort** hotel tonight. Call 407-WDISNEY (934-7639).



Enjoy unlimited digital downloads of all your **Disney PhotoPass®** vacation photos for one price with **Memory Maker!**

- One day of photos with **Memory Maker One Day**
- All of your vacation photos with **Memory Maker**

Visit the **My Disney Experience mobile app*** to preview and purchase your photos.

Memory Maker includes photos taken during the applicable Memory Maker window and linked to the Memory Maker guest's Disney account. A valid theme park admission is required to receive certain attraction photos and other digital content. Photos and other digital content will expire pursuant to the expiration policy at <https://mydisneyexperience.com/terms-and-conditions>. Valid theme park admission required for certain photo locations. Memory Maker is subject to Memory Maker terms at <https://mydisneyexperience.com/terms-and-conditions>. Disney's Memory Maker is not available for international travel. Subject to change without notice. *Online registration required. Message, data and roaming rates may apply. Availability subject to hardware limitations and behavior may vary by hardware or service provider. Coverage not available everywhere.

From Group Ultimate Tours to Private Tours, VIP experiences make your vacation carefree with an expert by your side every step of the way across all four *Walt Disney World®* Theme Parks!

Learn more by calling 407-560-4033 or visiting enchantedextras.com

©Disney WDW-17-54149

DISCOVER VACATIONS YOU NEVER OUTGROW.

Payment Options

Walt Disney World® Resort accepts Disney Visa® Cards, *Disney Rewards®* Redemption Card, Disney Gift Card, Visa®, MasterCard®, Discover®, American Express®, Diners Club®, JCB®, traveler's checks, cash and Disney Dollars.

©Disney

English GUIDEMAP

Magic Kingdom®



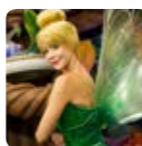
Download *My Disney Experience* from an app store to access real-time Park information and step-by-step walking directions. Or visit MyDisneyExperience.com on your mobile browser.

For in-Park updates & assistance, Tweet to @WDWToday!

Fantasy Reigns



NEW! Happily Ever After
Presented by **PANDORA® Jewelry**
Come experience the grandest of finales to your day in *Magic Kingdom®* Park during *Happily Ever After*—the newest, most spectacular fireworks show in the Park's history! See *Times Guide*.



Meet Tinker Bell at Town Square Theater FP+
Spend some time with your favorite pint-sized pixie when you magically shrink down to the size of a fairy and enter this beautiful setting filled with a collection of Tink's treasures!

SHOPPING

Throughout *Magic Kingdom* Park, you'll find unique shopping experiences. From apparel and toys, to embroidered Mickey Ear hats, to Cinderella Castle and Monorail play sets, you can always remember the magic. You can also download the *Shop Disney Parks* mobile app to search for and purchase authentic *Walt Disney World®* Resort merchandise.

Merchandise Package Delivery and Pickup
Instead of carrying your purchases all day, have them delivered to the Main Street Chamber of Commerce near the Park entrance and pick them up as you exit the Park. Please allow three hours for delivery to the front of the Park. If you prefer, have your purchases delivered directly to your *Disney Resort* hotel. See a *Merchandise Cast Member* for more details.

DINING Dining Reservations

Table-Service restaurants book quickly, so please make reservations through the *My Disney Experience* app, at disneyworld.com/dine, by calling 407-WDW-DINE (939-3463), or for additional assistance by visiting any Guest Relations location. *Most reservations must be canceled at least one day prior to the date of your reservation or a per person cancellation charge will be incurred (policies and charges vary by location; please confirm before finalizing your reservation).*

Mickey Check

Look for the Mickey Check on menus throughout the *Walt Disney World* Resort for kids' meals and other items that meet *Disney Nutrition Guidelines*. For more information, please visit disneymickeycheck.com.

For special dietary needs, please see a Restaurant Cast Member upon arrival.

Don't Forget Your Times Guide!

Pick up the *Times Guide* to get additional information regarding shows, entertainment, operating hours and even character appearances!

- Entertainment, outdoor shows and other Guest offerings are subject to change without notice.
- Theater venues have limited capacity and may fill up before show time. Please ensure your entire party is together prior to entering the facility.
- Some walkways in the Park may close periodically.

My Disney Experience

The official mobile app that's the one-stop shop for your *Walt Disney World®* vacation!

Download it for FREE today*
*App includes products for purchase.



You can also visit MyDisneyExperience.com on your mobile browser.

Wi-Fi is available in most areas.

- Buy *Walt Disney World* Theme Park tickets!
- Modify your *Disney FastPass+™* experiences on the go.
- Preview and purchase your *Disney PhotoPass®* photos.
- Use *Smart Maps* to explore the fun.

Availability subject to device limitations and features may vary by device or service provider. Message and data rates may apply. Coverage and app stores not available everywhere. If you're under 18, get your parent's permission first. **Valid Theme Park admission and online registration required. *Disney FastPass+* attractions and entertainment experiences, the number of selections you can make and available arrival windows are limited. *In-app ticket purchases not available to residents of all countries.

Apple® and the Apple logo are trademarks of Apple Inc., registered in the U.S. and other countries. App Store is a service mark of Apple Inc. Google Play is a trademark of Google Inc. ©Disney MMPLUS-16-49747

FP+ RESERVE ACCESS TO SOME OF YOUR MUST-DO FUN!
 Select up to three FastPass+ experiences by visiting a FastPass+ kiosk identified on the map with FP+. Once you redeem your initial selections, return for information about availability and selecting additional experiences.

Complimentary Wi-Fi
 Wi-Fi is available in most areas. Some attractions and shows may have limited availability.

FRONTIERLAND

LIBERTY SQUARE

TOMORROWLAND

ADVENTURELAND

MAIN STREET, U.S.A.

ENTERTAINMENT

- Move It! Shake It! Dance & Play It! Street Party
 - Disney Festival of Fantasy Parade
 - **NEW!** Happily Ever After Presented by PANDORA® Jewelry
- Pick up a Times Guide for more information.

Express Monorail to Parking Lot

Monorail to Magic Kingdom® Resorts

Boat to Magic Kingdom Resorts

Ferryboat to Parking Lot

Buses to Disney Resort hotels

Special Considerations for Attractions
Safety: Please abide by all safety warnings and notices.
 Supervise children at all times. Children under age 7 years must be accompanied by a person age 14 years or older.
 For your safety while on attractions, remain seated with hands, arms, feet and legs inside the vehicle. Supervise children.
Physical considerations on designated attractions:
 ▲ **Warning!** For safety, you should be in good health and free from high blood pressure, heart, back or neck problems, motion sickness, or other conditions that could be aggravated by this adventure. Expectant mothers should not ride.

MAIN STREET, U.S.A.

- 1 **Walt Disney World® Railroad** HC to Frontierland® and Fantasyland®.
- 2 **City Hall** i Guest Relations, Information, and Lost and Found.
- 3 **Sorcerers of the Magic Kingdom** CC Search for clues throughout the Park to defeat the Disney Villains. *Interactive adventure. At your own pace.*
- 4 **Harmony Barber Shop** Call 407-939-7529 to make an appointment. *Separately priced experience.*
- 5 **Town Square Theater** FP+ Meet Mickey Mouse and Tinker Bell!

- 6 **Tony's Town Square Restaurant** LD \$\$ Italian cuisine, featuring pastas, pizzas and salads.
- 7 **Main Street Bakery** BLS \$ Starbucks® espresso, house-made Disney pastries, Artisan sandwiches and salads.
- 8 **Plaza Ice Cream Parlor** Hosted by Edy's® \$ Hand-scooped ice cream and waffle-bowl sundaes.
- 9 **The Plaza Restaurant** LD \$\$ Sandwiches, burgers and sundaes.
- 10 **Casey's Corner** Hosted by Coca-Cola® LDS \$ Specialty hot dogs and corn dog nuggets.
- 11 **The Crystal Palace, A Buffet with Character** B \$ LD \$\$\$ Character buffet. American cuisine.
- 12 **Main Street Chamber of Commerce** Merchandise Package Pickup.
- 13 **Emporium** One-stop shopping destination for Disney Character gifts and Park souvenirs.
- 14 **Uptown Jewelers** Featuring PANDORA® Jewelry Disney figurines and artist sketches.

ADVENTURELAND

- 15 **Swiss Family Treehouse** Explore the treehouse inspired by the classic Disney film.
- 16 **The Magic Carpets of Aladdin®** FP+ Fly high on a magic carpet above Adventureland.
- 17 **Jungle Cruise®** FP+ Set sail on a whimsical cruise through exotic rivers.
- 18 **Walt Disney's Enchanted Tiki Room** HC AED Watch tropical birds and colorful flowers come to life.
- 19 **Pirates of the Caribbean®** FP+ AED Embark on a voyage to a time when pirates ruled the seas.
- 20 **A Pirate's Adventure~Treasures of the Seven Seas** HC AED Discover mystic adventure and collect *Treasure Finder Cards* in this self-guided quest through Adventureland! *Interactive adventure. At your own pace. See a Cast Member for assistance.*

LEGEND

- Symbols on Map**
- Restrooms
 - Accessible Restrooms
 - Companion Restrooms
 - First Aid* Presented by Florida Hospital
 - Automated External Defibrillators
 - Guest Relations
 - Baby Care Center Hosted by Huggies®
 - Service Animal Relief Areas
 - Smoking Locations

- ATMs Presented by Chase
- Stroller Rentals Hosted by Huggies®
- Wheelchair Rentals
- Locker Rentals
- Disney PhotoPass® Photographers
- Memory Maker Sales Center
- Nikon® Picture Spot

- Park Information**
- Character Greetings
 - Parade Route
 - FastPass+ kiosks available in English, Spanish and Portuguese.
 - Parade Viewing for Guests with Disabilities
 - Disney Vacation Club® Information Center
- *Emergency services available by calling 911.

- Symbols in List**
- Attraction/Show Considerations**
- Guest Relations
 - FastPass+ experience
 - Physical Considerations
 - Minimum Height Requirement
 - Must be ambulatory
 - May remain in wheelchair/ECV
 - Must transfer from wheelchair/ECV
 - Must transfer to standard wheelchair
 - Must transfer to standard wheelchair, and then to ride vehicle

- Sign Language (available Mondays and Thursdays)
- Automated External Defibrillators
- Devices Available at Guest Relations**
- Assistive Listening
- Handheld Captioning
- Video Captioning
- Audio Description

- Dining**
 All dining locations listed accept a Disney dining plan unless otherwise noted.
 Mobile Ordering
 Reservations recommended. Call 407-WDW-DINE (939-3463).
 B - Breakfast L - Lunch
 D - Dinner S - Snack
 \$ = \$14.99 and under per adult
 \$\$ = \$15-\$34.99 per adult
 \$\$\$ = \$35-\$59.99 per adult
 \$\$\$\$ = over \$60 per adult
 See disneydiningpricinginfo.com for pricing details.

FRONTIERLAND

- 26 **Splash Mountain®** FP+ ▲ 40"/102 cm. AED Enjoy a thrilling log flume ride based on "Song of the South."
- 27 **Walt Disney World Railroad** HC to Fantasyland and Main Street, U.S.A.
- 28 **Big Thunder Mountain Railroad®** FP+ ▲ 40"/102 cm. AED Ride through a gold-mining town on a runaway train.
- 29 **Tom Sawyer Island** Brave this Mark Twain-inspired hideaway.
- 30 **Country Bear Jamboree** HC Have a knee-slappin' time with these singing bears.
- 31 **Golden Oak Outpost** LDS \$ Chicken breast nuggets.
- 32 **Pecos Bill Tall Tale Inn and Cafe** LD \$ Nachos, fajitas, burritos and Southwest burgers.
- 33 **Westward Ho** \$ Frozen lemonade and snacks.
- 34 **Frontier Trading Post** Disney Trading Pins and accessories.

LIBERTY SQUARE

- 35 **The Hall of Presidents** Behold all the U.S. Presidents on stage together. *22 minutes.*
- 36 **Liberty Square Riverboat** Cruise the Rivers of America aboard the Liberty Belle.
- 37 **Haunted Mansion®** FP+ AED Take a spine-tingling tour of this dark, haunted estate.
- 38 **The Diamond Horseshoe** LD \$\$\$ All-you-care-to-enjoy American feast served Family-style.
- 39 **Liberty Tree Tavern** L \$ D \$\$\$ L: Burgers, pasta, salads and an All-American Feast. D: All-you-care-to-enjoy American feast served Family-style.
- 40 **Sleepy Hollow** BLS \$ Funnel cakes, waffles and ice cream cookie sandwiches.
- 41 **Liberty Square Market** LS \$ Bottled beverages, slushies, hot dogs, turkey legs, fruit and snacks.

FANTASYLAND

- 43 **Prince Charming Regal Carrousel** Ride this classic attraction.
- 44 **Mickey's PhilharMagic®** FP+ AED Get swept away in this 3-D movie.
- 45 **Peter Pan's Flight®** FP+ Fly with Peter Pan aboard a magical ship.
- 46 **"It's a small world"™** FP+ AED Take a boat tour around the globe.
- 47 **Enchanted Tales with Belle** FP+ AED Enjoy an interactive story adventure featuring Belle, Lumiere and possibly even you.
- 48 **Under the Sea~Journey of The Little Mermaid** FP+ AED Descend below the waves for a splashy musical adventure.
- 49 **Meet Ariel in Her Grotto** FP+ Meet The Little Mermaid in her retreat under the sea.
- 50 **Pete's Silly Sideshow** Meet Donald, Daisy, Goofy & Minnie!
- 51 **Walt Disney World Railroad** HC to Main Street, U.S.A. and Frontierland.
- 52 **Casey Jr. Splash 'N' Soak Station** Cool off in this whimsical water play area.
- 53 **The Barnstormer** FP+ 35"/89 cm. AED Take flight on this thrilling junior roller coaster. *Expectant mothers should not ride.*
- 54 **Dumbo the Flying Elephant®** FP+ Ride your favorite flying elephant.
- 55 **Mad Tea Party** FP+ Spin around and around in a giant teacup.
- 56 **Fairytale Garden** Encounter a fairytale friend in this garden setting.
- 57 **The Many Adventures of Winnie the Pooh** FP+ AED Travel through the Hundred Acre Wood in an oversized Hunny Pot.
- 58 **Seven Dwarfs Mine Train** FP+ 38"/97 cm. AED Race and rock through a diamond mine on this family coaster. *Expectant mothers should not ride.*
- 59 **Princess Fairytale Hall** FP+ Meet some of your favorite Disney Princesses!
- 60 **Cinderella's Royal Table** B \$ LD \$\$\$ Character dining with Disney Princesses.
- 61 **Pinocchio Village Haus** LD \$ Flatbreads, chicken breast nuggets and salads.
- 62 **Be Our Guest Restaurant** BD \$ L \$ B: Open-faced bacon and egg sandwich and croissant doughnut. L: Sandwiches and salads. D: French-inspired American cuisine.

TOMORROWLAND

- 70 **Monsters, Inc. Laugh Floor®** FP+ AED Discover the power of laughter in this live comedy show with audience participation!
- 71 **Tomorrowland Speedway** FP+ 32"/81 cm.; 54"/137 cm. to ride alone AED Take a ride in your very own hot rod.
- 72 **Space Mountain®** FP+ 44"/112 cm. AED Blast off on this coaster ride in the dark.
- 73 **Astro Orbiter** Pilot your own spaceship high above Tomorrowland.
- 74 **Tomorrowland Transit Authority PeopleMover** Presented by Alamo® AED Ride this emission-free mass transit system of the future.
- 75 **Walt Disney's Carousel of Progress** HC AED Travel through the 20th century to see how technology has improved our way of life.
- 76 **Buzz Lightyear's Space Ranger Spin®** FP+ AED Fire lasers to defeat Zurg in this shooting gallery-inspired game.
- 77 **Cosmic Ray's Starlight Café** Hosted by Coca-Cola® LD \$ Burgers, chicken breast nuggets, rotisserie chicken, sandwiches and salads.
- 78 **Auntie Gravity's Galactic Goodies** \$ \$ Ice cream, smoothies and sundaes.
- 79 **Cool Ship** Hosted by Coca-Cola® \$ \$ Snacks and beverages. *Open seasonally.*
- 80 **The Lunching Pad** LDS \$ Hot dogs, pretzels and frozen beverages.
- 81 **Tomorrowland Terrace Restaurant** L \$ Burgers, chicken breast tenders, sandwiches and salads. *Open seasonally.*
- 82 **Merchant of Venus** *Star Wars*™-inspired toys and apparel, including build-your-own lightsabers.